



## SRWR Guidance Note

### Works On Roads with Traffic Sensitivity and Other Designations

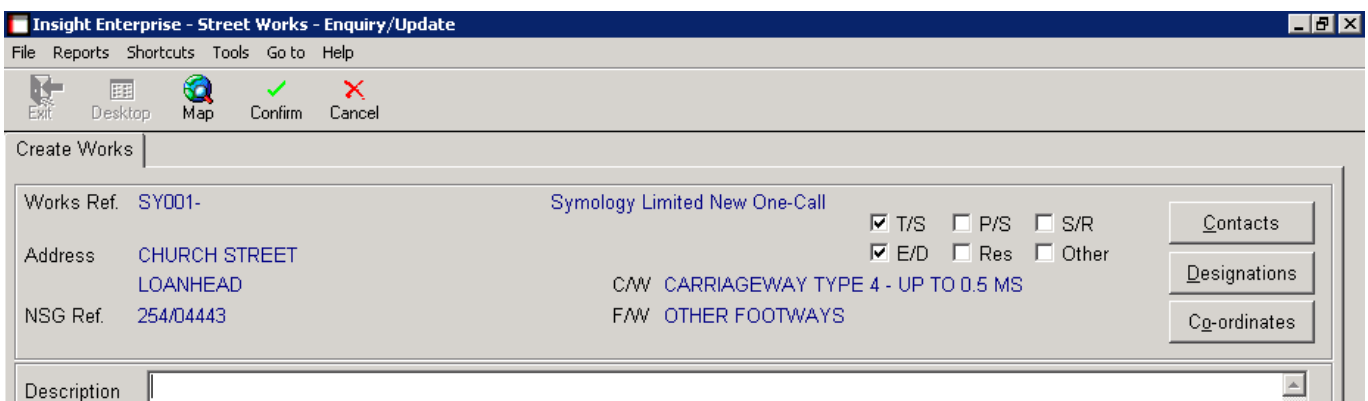
#### Introduction

The Additional Street Data (ASD) that is provided with the National Street Gazetteer (NSG) contains details of where roads are designated as Traffic Sensitive, having Special Engineering Difficulty, or other designations such as roadside trees or areas of conservation. It is important that these designations are fully considered by works promoters, to ascertain whether they impact on the planned works and to make appropriate arrangements if they do.

This document gives advice on the way the SRWR should be used, both by works promoters to ensure that due account is taken of the designations, and by roads authorities to ensure that this is monitored. The most common of the designations is Traffic Sensitivity, which also has an impact on notice periods, so this is used for the examples in this document.

#### Works Promoter Raising Works On Roads with Designations

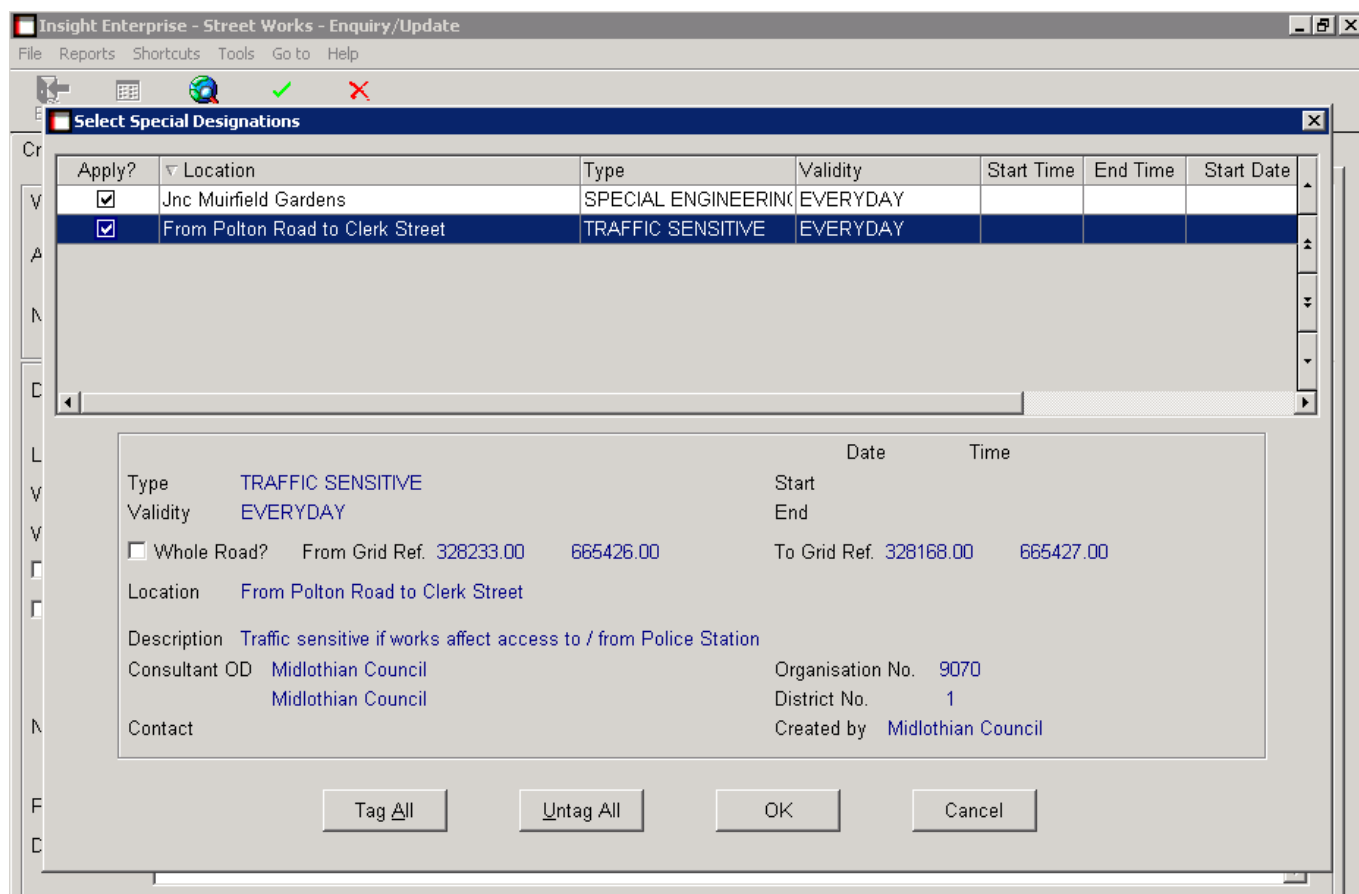
The works creation screen in the SRWR indicates whether there are any designations associated with the road that has been selected for recording the works, as shown below:



*The top part of the Works creation screen. The checkboxes marked T/S and E/D, show that the road has designations for Traffic Sensitivity and Special Engineering Difficulty*

The above screen also shows the Designations button that can be used to obtain detailed information about the designations. This detail is provided in an overlaid window, which also enables the user to indicate whether the works is to be carried out within the scope of the designations or not.

The overlaid window that appears when the Designation button is pressed is shown on the following page.



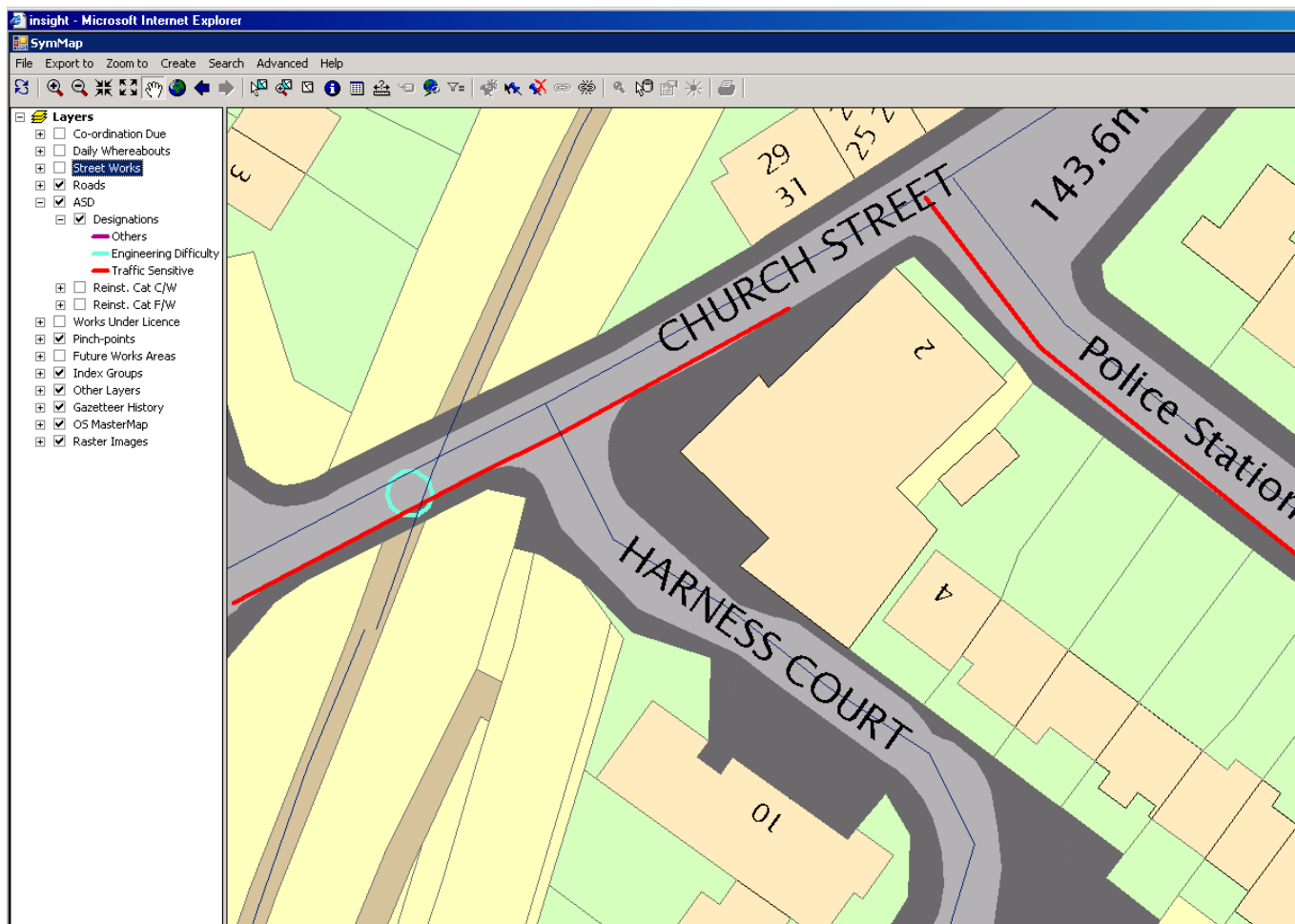
*The overlay window showing details of the designations*

The top part of the screen contains a summary grid with one line for each designation. As each line on the grid is highlighted, full details of the designation is shown on the lower part of the screen. In the example shown above, the description of the Traffic Sensitivity is related to the location where it applies, i.e. whether the works is in a location that would affect access to the Police Station. However, for Traffic Sensitivity designations in particular, the Description will usually define the times during which the designation applies, e.g. "Monday to Friday, 07:00 to 09:30 and 16:30 to 18:30". It is unusual not to have times defined for Traffic Sensitivity, as it is very rare to have sensitivity that applies 24 hours per day. In the event of doubt over when the sensitivity applies, the promoter should contact the roads authority to check.

All the designation information should be studied carefully by the works promoter, in the context of the plans for the intended works, to determine which of the designations apply to the works, and which do not. The screen may be used to "Untag" those that do not apply. **A designation must not be untagged unless the operator is sure that the works is to be executed entirely outside the scope of the recorded designation. Where designations are untagged, the user should enter Notice Text for the notice, to justify why the designations do not apply.**

Where the works is within the designation location, but the designation is only at particular times, it may only be untagged if there is a commitment not to work within the given times. For example, if Traffic Sensitivity applies Monday to Friday, 07:00 to 09:30 and 16:30 to 18:30, it is not sufficient that the works will be started after 09:30; there must also be a commitment that the road will be returned to full availability for traffic by 16:30 on any day the works is in progress.

Note; In the case of Traffic Sensitive roads, the SRWR will automatically apply the appropriate noticing rules depending on whether all Traffic Sensitivity designations have been untagged.



*Map screen showing designations  
Red lines indicate areas of Traffic Sensitivity  
The blue circle shows the location of a bridge (Special Engineering Difficulty)*

It is a requirement of the SRWR that the intended location of works must be plotted on the map. The above map shows that, when doing so, it is easy to determine whether the works is within the locality of any of the designations. If there are multiple designations of the same type on the road, the "Info" button can be used to select each designation and see the Description associated with it.

### **Roads Authority Monitoring Works On Roads with Designations**

Roads Authorities should apply special focus on the monitoring of activities on roads with associated designations, in particular Traffic Sensitivity, to ensure that the requirements of the designations are being adhered to, and to ensure that the designations are not being "untagged" from the works without justification. In order to do this, it is necessary to have a simple mechanism of identifying works that are on roads with designations, whether or not they have been "untagged" from the works.

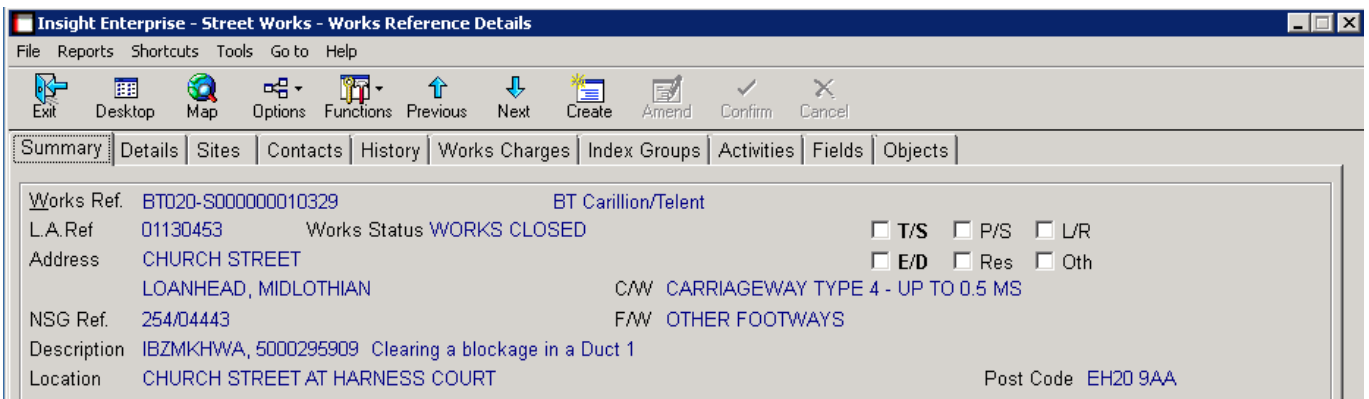
This can be achieved within the "Notices Awaiting Assessment" function, which is the standard facility used within the SRWR for Roads Authorities to monitor incoming notices. The grid display in this function includes information indicating whether the road has associated designations, and this alerts the roads authority user that this is a works they ought to at least look at and review carefully.

The default layout can be changed to suit the user’s requirements. For example, the layout can be configured to include a checkbox to indicate whether there are any traffic sensitivity designations associated with the street, and another checkbox to indicate whether the designations have been applied to the works. It would even be possible to use highlighting to indicate when designation had been untagged on the works.

So, the Notices Awaiting Assessment function provides the Roads Authority recipient of the notice with the following:

- an immediate alert on the NAA grid for all works on roads that have a TS designation, and any other designations if required, whether or not they have been "untagged".
- the ability to drill down to the Summary screen for the works and see whether the designations have been "untagged", and if they have what justification has been given for this.
- the option to select the Details TAB, and then to use the Designation button to view which designations have been left "tagged" or "untagged", so that a more informed judgement can be made.

Whenever the works details are accessed, whether via a drill-down from the Notices Awaiting Assessment screen or any other route, the main screen also indicate whether there are any differences between the designations that exist in the gazetteer and those that have been applied to the works. On the screen below, it can be seen that the “**T/S**” and “**E/D**” are displayed in bold. This indicates there is a difference between the Traffic Sensitivity and Engineering Difficulty designation that exist in the gazetteer and those that have been tagged to apply to the works.



*Screen showing there are T/S and E/D designations on the gazetteer that have not been tagged to apply to the works*

If the Roads Authority identifies any transgression of the planned approach for the works that has a co-ordination impact, appropriate action should be taken, including the option to issue formal Direction notices.